



## Bio-Plugin™ BIOMETRIC IDENTIFICATION SYSTEM

### The Future of Secure Authentication

The M2SYS™ Bio-Plugin™ solution is a high-performance, secure, accurate fingerprint recognition system that jail management software providers can rapidly integrate for distribution to their customers. As a seamless system component, any person can be instantly authenticated by simply placing their finger on a high-performance fingerprint scanner, such as the M2-S™ Reader, connected to a Windows-based PC, ensuring the highest level of identification accuracy.

Bio-Plugin™ can be integrated into any Windows or Web based software, providing an instant, front-end biometric authentication module. The solution is ideal for inmate identification in small, medium and large facilities, offering the following benefits:

- Avoid duplicate booking entries
- Track inmate movements throughout the facility
- Verify inmate identity prior to release
- Authenticate for work release, commissary, and medication
- Prevent identity fraud
- Safeguard quality of life for community citizens
- Bolster jail security
- Improve public image with advanced technology investment
- Reduce process redundancies

The system can be easily utilized in any area where accurate, fast identification adds value in preventing identity theft and speeding processes: inmate booking and release, movement tracking, visitor identification, etc. Each fingerprint template is linked to a unique ID number in the host JMS software, enabling a single fingerprint scan to instantly and accurately retrieve a person's information.

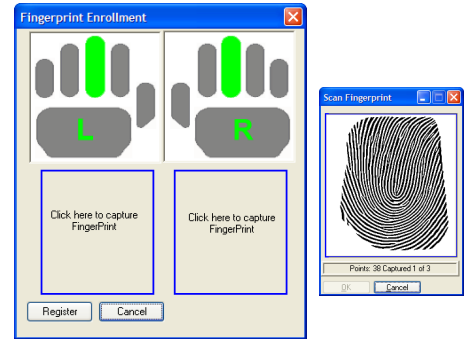


BIOMETRIC AUTHENTICATION

# What is the Process?



*During inmate booking, officers complete their normal data entry process for new inmates using the facility's JMS.*



*Clicking on a button in your jail software sends a message to Bio-Plugin to enroll a new inmate. The fingerprint capture window appears as a seamless module.*



*At any workstation equipped with the identification software and a fingerprint reader, a person's fingerprint can be scanned and matched against all prints in the database.*



*All fingerprint identification processing occurs in the Bio-Plugin server within milliseconds. When a match is found, the associated registration ID is automatically fed to the jail software, which displays the person's profile data.*

## Why the M2SYS Bio-Plugin™ System?

- Its **FAST**: The system can process prints at an amazing 20,000/second and is fully scalable.
- Its **SECURE**: All fingerprint data is 128-bit encrypted.
- Its **ACCURATE**: Several unique system parameters ensure the highest levels of accuracy and consistent performance.
- Its **SIMPLE**: Bio-Plugin™ becomes a part of the jail management software. There is no separate product to learn and manage.
- Its **PROVEN**: M2SYS has integrated its patented fingerprint recognition technology into hundreds of prominent software solutions in a variety of industries and is used by thousands of end users worldwide.
- Its **FLEXIBLE**: The system works in WAN, LAN, CITRIX, and Terminal Services environments.



48 Stone Gate South – Longwood, FL 32779  
407-571-1302 (O)  
407-831-1997 (F)  
[www.datasecurities.org](http://www.datasecurities.org)